

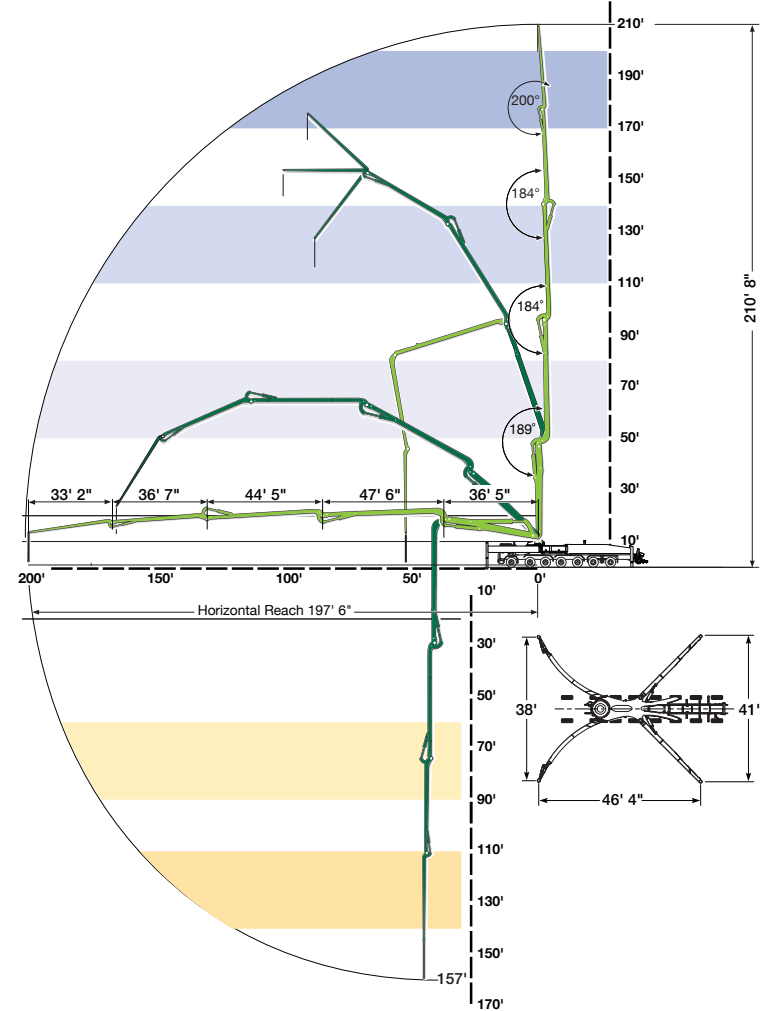
# S 65 SXF

## SPECIFICATIONS

	U.S.	Metric
Vertical Reach	210' 8"	64.21 m
Horizontal Reach	197' 6"	60.2 m
Below Grade Reach w/ Tip Hose	157'	47.8 m
Pipeline Diameter	5"	125 mm
Boom Type / Sections	Articulating Overhead Roll & Fold® / 5	
Boom Rotation	370 degrees	
Unfolding Height	50' 2"	15.3 m
Outrigger Type - Front	Super X Folding Outriggers, Fully Hydraulic, Extension & Jacking	
Outrigger Type - Rear	Hydraulic Slewing & Jacking	
Outrigger Soil Pressure w/o Dunnage (front/rear)	670/585 psi	46/40 bar
Outrigger Soil Pressure w/ Dunnage (front/rear)	170.4/148.6 psi	11.7/10.25 bar
Outrigger Width - Front	38'	11.6 m
Outrigger Width - Rear	41'	12.5 m
Outrigger Length	46' 4"	14.1 m

## PUMP SPECIFICATIONS

	U.S.	Metric
Theor. Concrete Output	213 cu yds/h	162 cu m/h
Max. Pressure on Concrete	1169 psi	81 bar
Max. Strokes Per Minute	22	
Max. Aggregate Size	2.5"	63.5 mm
Material Cylinder Diameter	10"	250 mm
Material Cylinder Stroke	98"	2500 mm
Differential Cylinder Diameter	4.7"	120 mm
Maximum Oil Flow	158.5 gal/min	600 l/min
Hydraulic Circuitry Type	MPS	
Valve Type	B Rock	



\*Pump specifications are for standard units. Other units are available. Specifications are subject to change without prior notice.

