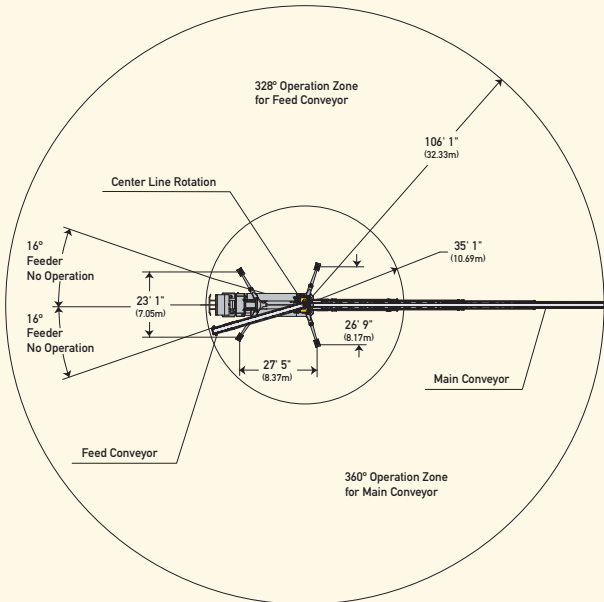
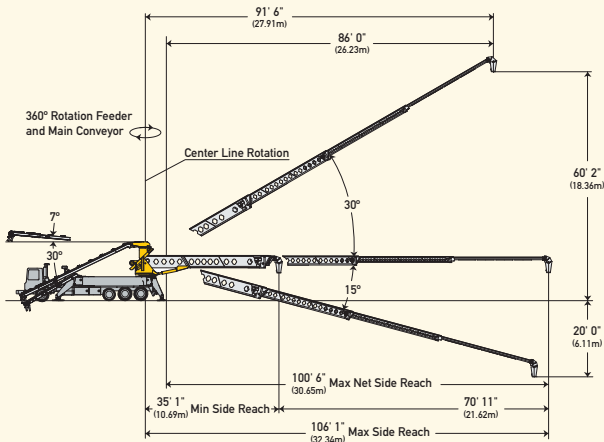
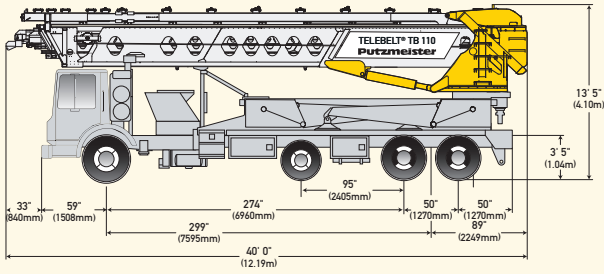


Telebelt® TB 110 Specifications



Conveyors

Conveyor horizontal reach

Maximum at 0°	106' 1"	(32.34m)
Maximum at 30°	91' 6"	(27.91m)

Conveyor belt width

	18"	(457mm)
--	-----	---------

Feed conveyor length

	38' 0"	(11.60m)
--	--------	----------

Feed conveyor belt width

	18"	(457mm)
--	-----	---------

Trunk/end hose length

	15' 0"	(4.57m)
--	--------	---------

Discharge height from grade

Maximum at 30°	60' 2"	(18.36m)
Maximum at -15°	-20' 0"	(-6.11m)

Main & feed conveyors

Observed capacity at 0°	5.00 yd ³ /min	(4.00m ³ /min)
Observed capacity at 20°	5.00 yd ³ /min	(4.00m ³ /min)

Outriggers

Net reach beyond outriggers —

at 0°	100' 6"	(30.65m)
at 30°	86' 0"	(26.23m)

Outrigger spread L-R — front manual

out, hydraulic extended down	23' 1"	(7.05m)
------------------------------	--------	---------

Outrigger spread L-R — rear manual

out, hydraulic extended down	26' 9"	(8.17m)
------------------------------	--------	---------

Outrigger spread front to rear

	27' 5"	(8.37m)
--	--------	---------

General Specifications

Water tank capacity	200 gal	(757 L)
Hydraulic oil tank capacity (with cooler)	150 gal	(568L)

Truck Specifications *•+

Weight	20,525 lbs	(9,310kg)
Engine horsepower	405 hp	(302kW)
Wheelbase	299"	(7,595mm)
Cab height	104"	(2,642mm)
Steering radius (outside)	45' 6"	(13.87m)
Steering angle	30°	
Fuel tank capacity	80 gal	(303L)
Transmission	Mack T310 10-Speed	

Transport Axle Weights *•+

Steering	19,008 lbs	(8,621kg)
Pusher	10,000 lbs	(4,535kg)
Tandem	33,754 lbs	(15,309kg)
Total	62,762 lbs	(28,465kg)

Maximum theoretical values listed.

* Truck dimensions will vary with different truck makes, models and specifications.

• Weights are approximate and include truck, fuel, and 100 gal (379L) of water.

+ All specifications apply to units mounted on Mack MRU 613.



Putzmeister America, Inc.
1733 90th Street
Sturtevant, WI 53177 USA

Phone (262) 886-3200
Toll-free (800) 884-7210
Fax (262) 884-6338